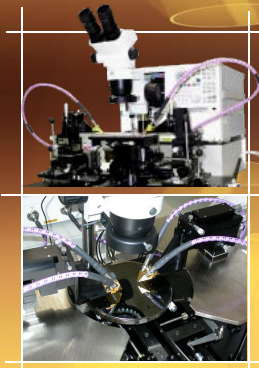


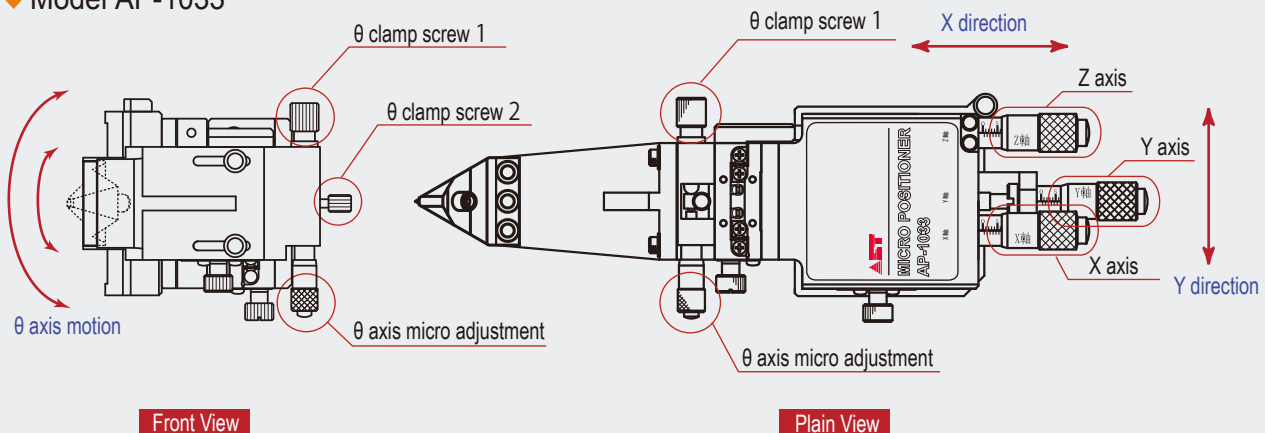
# Micro Positioner

## High Precision 4-Axes Positioning



The micro positioner provides high precision positionings on straight motions of X,Y and Z axes and rotational motion of theta axis. Each axis of X, Y, Z and theta has a micrometer that can be fine-adjusted. A parallel positioning of a probe is performed roughly by rotating the theta axis stage, and is adjusted finely by controlling a micro adjustment. The theta axis provides  $\pm 3$  degrees of rotational motion. This micro positioner can be utilized under the severe measurement condition which does not allow even the slightest gap between the probe and a sample to be measured.

### ◆ Model AP-1033

**ADVANCED ELECTRONICS TECHNOLOGY**<http://www.aetjapan.com>

AET Associates, Inc.  
20370 Town Center Lane, Suite 252, Cupertino, CA 95014 U.S.A.  
Tel: 1-408-996-1760 Fax: 1-408-996-1962  
e-mail: [info@aetassociates.com](mailto:info@aetassociates.com) <http://www.aetassociates.com>

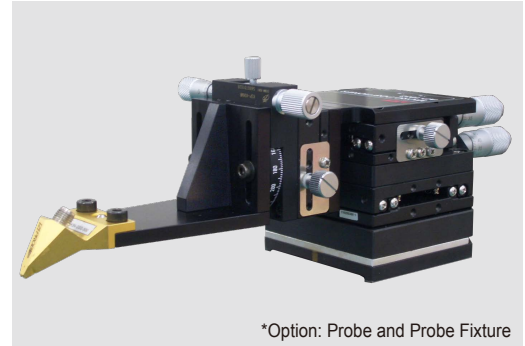
AET, Inc.  
2-7-6 Kurigi, Asaoku, Kawasaki-city, Kanagawa, Japan  
Tel: 81-44-980-0505 Fax: 81-44-980-1515  
e-mail: [contactus@aetjapan.com](mailto:contactus@aetjapan.com) <http://www.aetjapan.com>

# Micro-Positioner

The micro positioner provides 2 types of positioners to fit to a coaxial, multi-pin and other types of probes.

## Feature

- Highly precise positioning by four axes of X, Y, Z and theta.
- Theta axis has  $\pm 3$  degree micro adjustment.
- Each axis of X, Y, and Z is equipped with a 0.5mm micro adjustment.
- The linear motion of X, Y and Z axis is  $\pm 6.5$ mm, and the linear resolution of X, Y and Z axis is  $10\text{ }\mu\text{m}$ .
- A powerful magnet ON/OFF switchable lever locks or releases the micro positioner to and from the positioner table.
- A probe fixture can be custom-made so that it can be equipped for a various types of probes.
- It can be utilized for measurement of RF and DC circuits, etc.



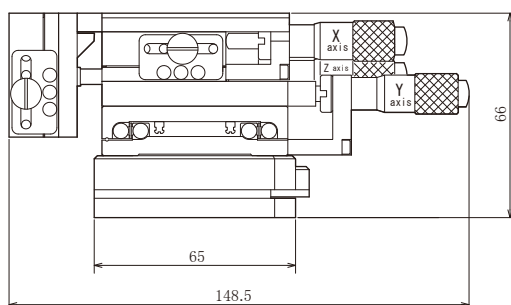
\*Option: Probe and Probe Fixture

## Specification

Type	AP-1023	AP-1033
Theta axis	—	○
Theta axis rotation angle	—	$\pm 3^\circ$
X/Y/Z max. linear motion	$\pm 6.5$ mm	$\pm 6.5$ mm
X/Y/Z stepping motion/oneroll	0.5mm	0.5mm
X/Y/Z linear resolution	$10\mu\text{m}$	$10\mu\text{m}$
ON/OFF switchable lever on a magnetic base	○	○
Body material	Aluminum	Aluminum
Surface finishing	Alumite	Alumite
Weight	1.6kg	1.9kg

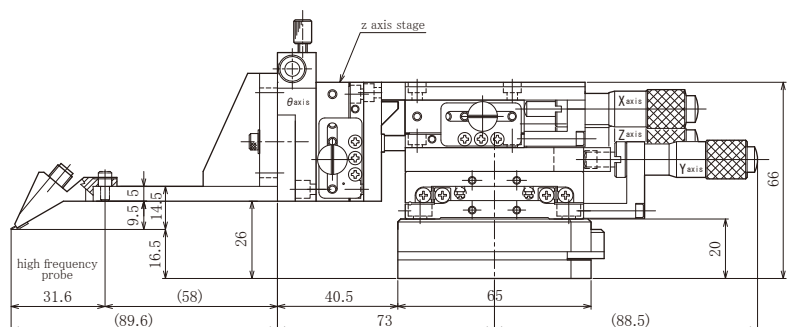
## Outline Drawing

Model AP-1023



Side View

Model AP-1033



Side View

\*Specifications and/or appearance are subject to change without prior notice for further improvement. Please confirm details with our sales department before placing an order.  
 \*All rights reserved. No part of the specification may be reproduced without permission.